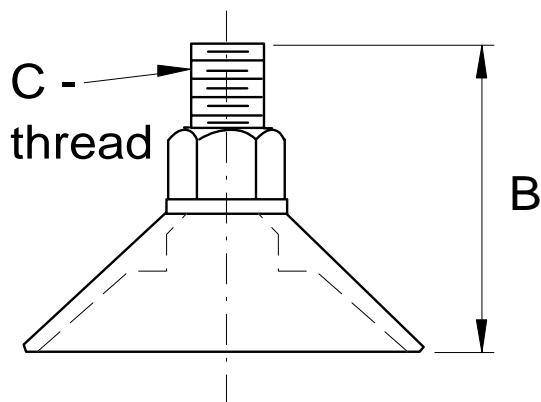
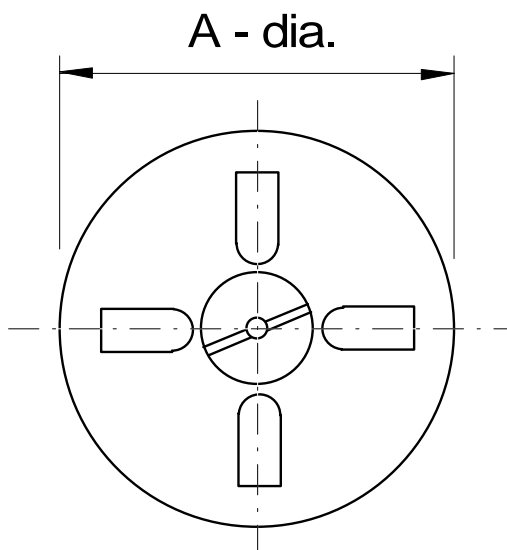


VC Vacuum Cups

(polyurethane)



Type	A	B	C	Max. Force
VC-38	3/8	5/8	10-32	.6 lbs
VC-75	3/4	7/8	10-32	1.2 lbs
VC-100	1	1-1/4	1/8 NPT	4.5 lbs
VC-150	1-1/2	1-3/8	1/8 NPT	9.0 lbs
VC-212	2-1/8	1-3/4	1/8 NPT	18.0 lbs
VC 325	3-1/4	1-5/8	1/4 NPT	36.0 lbs

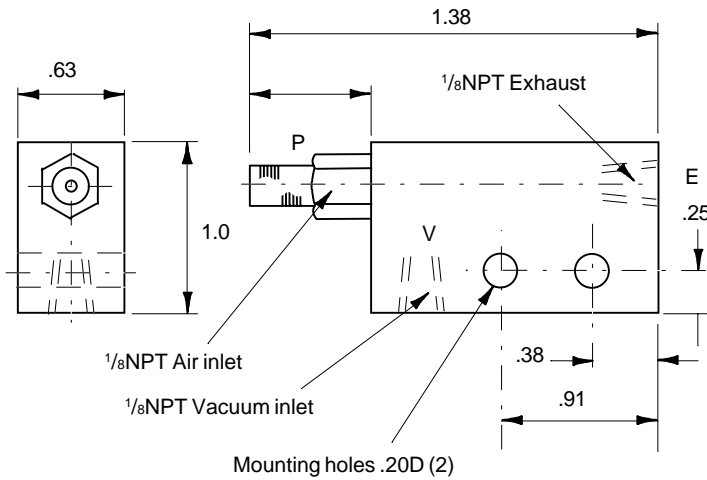
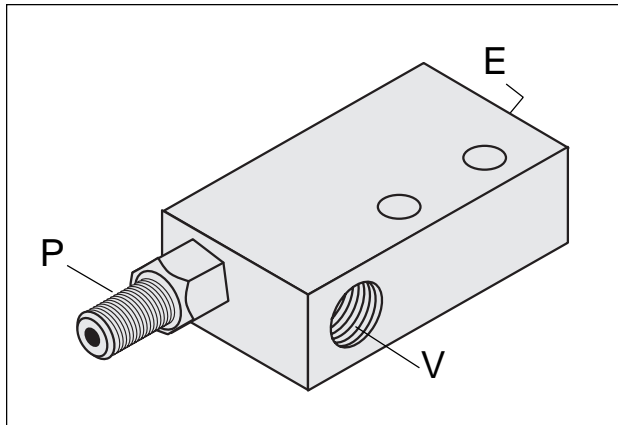


Technical data:

- Operating temperature range 0-120°F
- Oil resistant
- Made of durable polyurethane

Note: VC-38 and VC-325 do not have standoffs

VG Vacuum Generator



P= Compressed air connection
V= Vacuum connection
E= Exhaust

Supply compressed air to "P" and a vacuum will be produced at "V". The amount of vacuum may be controlled by a pressure regulator and flow control valve in the supply line.

Graph of supply pressure vs.vacuum produced

