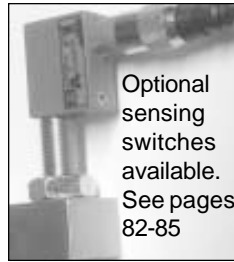
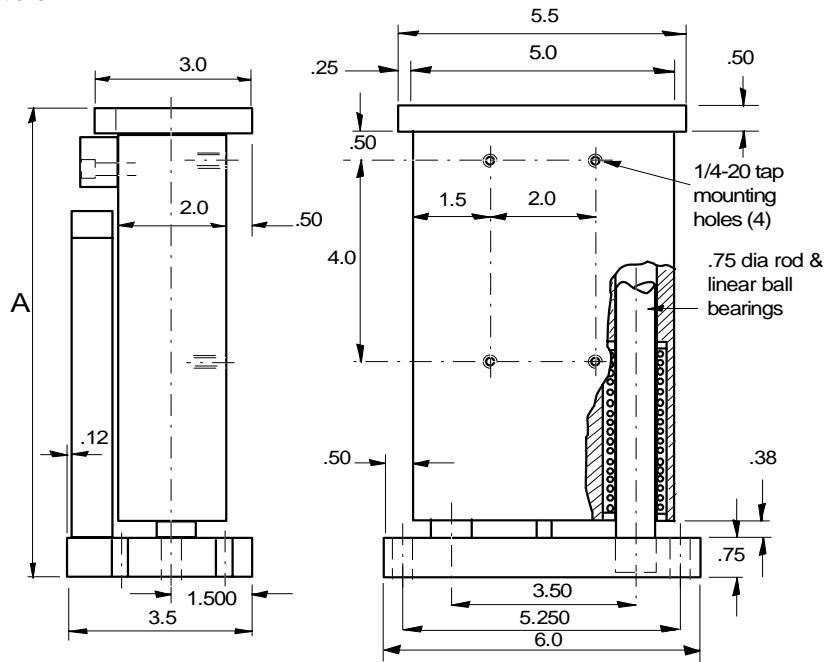
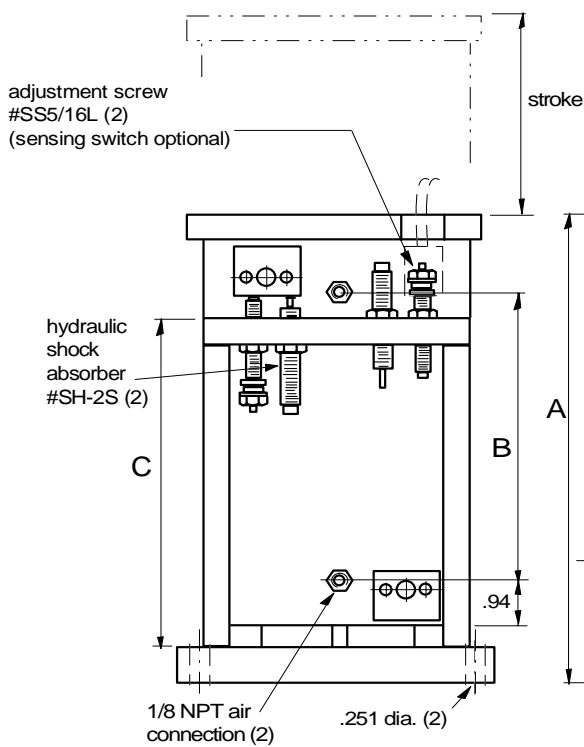
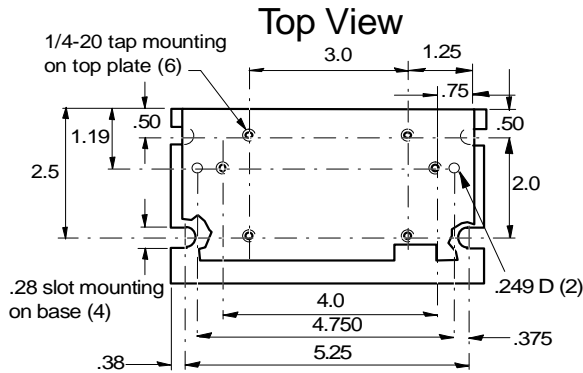


ET-3 Elevating Table



Optional sensing switches available. See pages 82-85



Type	Stroke	A	B	C	Force @ 80 psi	Weight
ET-3-2	0-2"	7.38	3.75	4.50	60 lbs	12 lbs
ET-3-4	0-4"	9.38	5.75	6.50	60 lbs	16 lbs

Technical data

- 1¹/₈" Bore
- Stroke designed with built in stopscrews with fine threads.
- The stopscrews can be used with sensing switches.
- Designed for production rates and long life.
- Seal kits and rebuild kits available.

Operating medium
 Operating pressure
 Repeat accuracy
 Air connection

Compressed air or hydraulic oil
 60-100 psi
 ±0.0005 in
 1/8 NPT