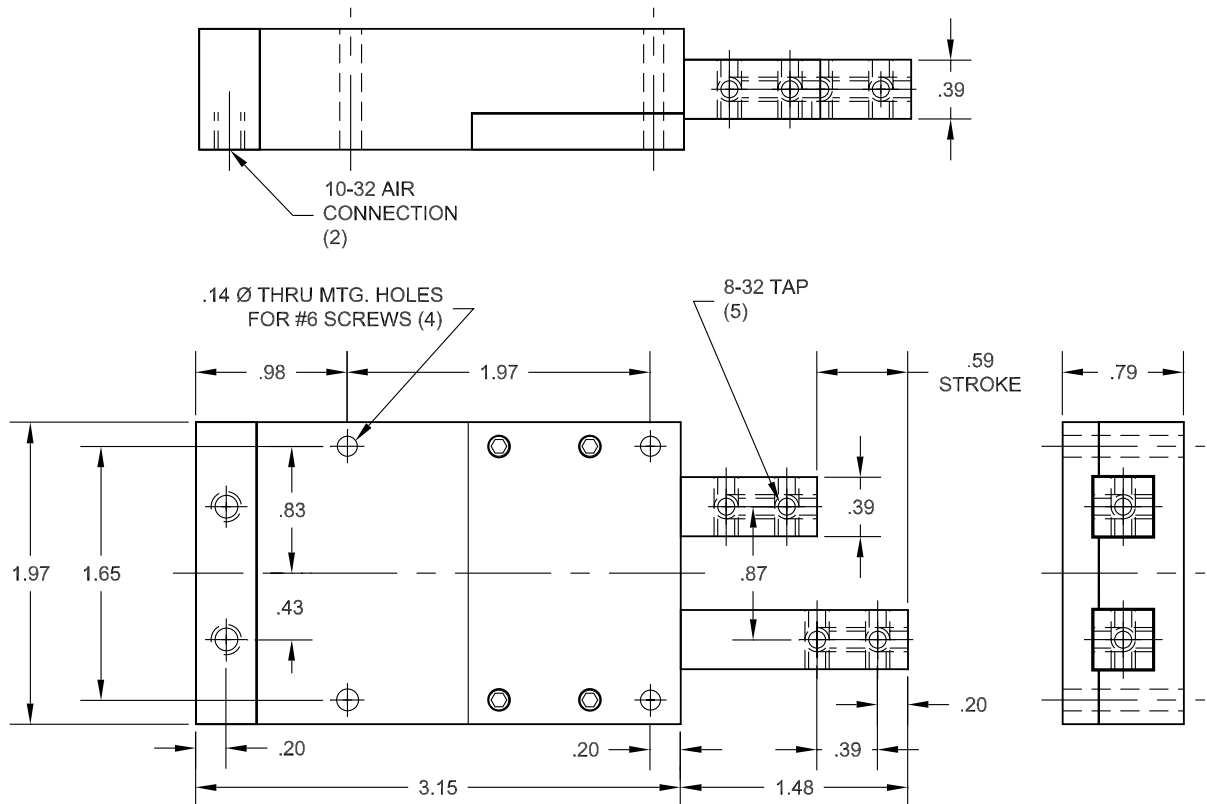
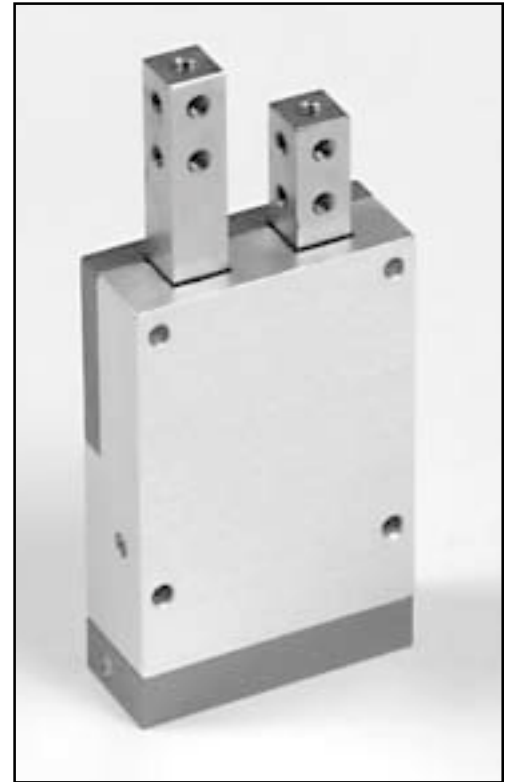


Escapement

B-ESC-2

These compact escapements are designed to operate with either feeder bowl tracks, parts magazines or any-time singulating of parts is required. The design allows a singular part to “escape” while retaining oncoming parts. Each escapement has two alternating, double acting air cylinders. An interlocking toggle only permits extension of one cylinder at a time. A 4-way, 2-position valve is used to operate this escapement. Supply air pressure is 60-100 PSI. Steel fingers are drilled and tapped for your tooling. Escapement body is anodized aluminum.



TECHNICAL DATA:

Operating Medium	Compressed Air	Extend Force	2.8 lbs
Operating Pressure	60-100 PSI	Retract Force	.70 lbs
Stroke	.59 in	Max Lateral Load (without support)	2.7 lbs
		Weight	15 oz