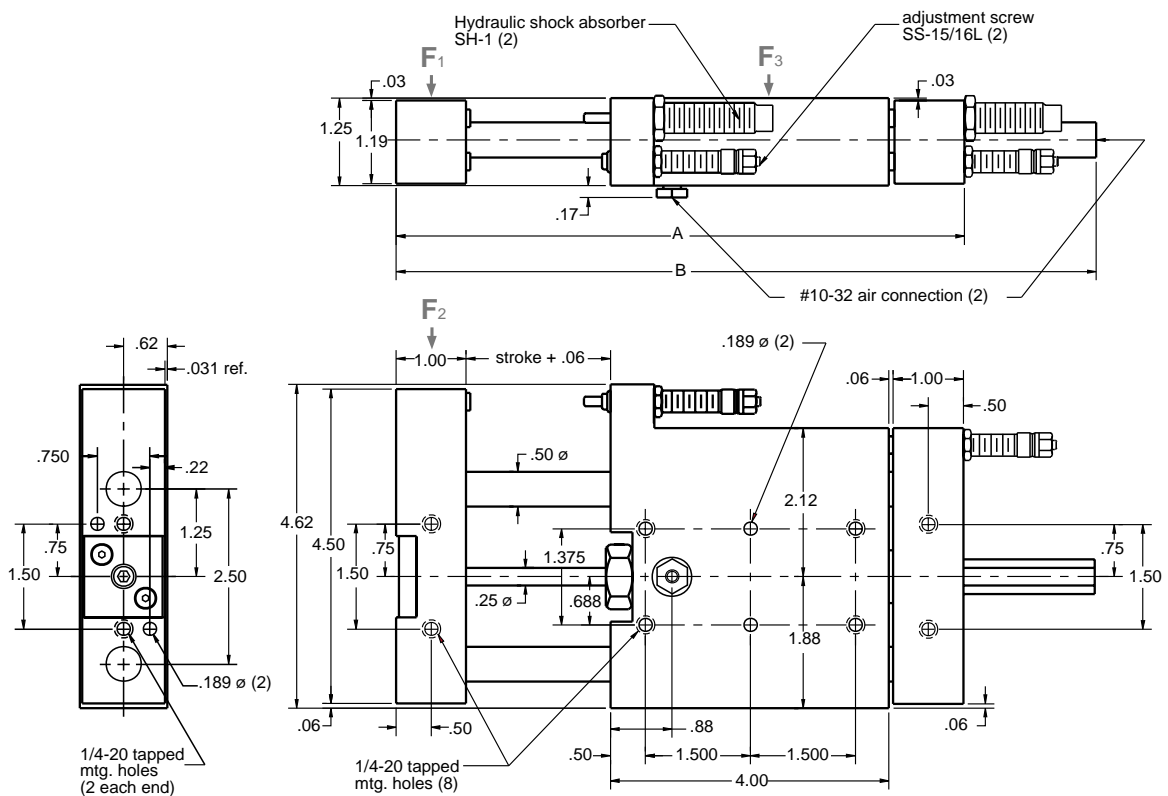
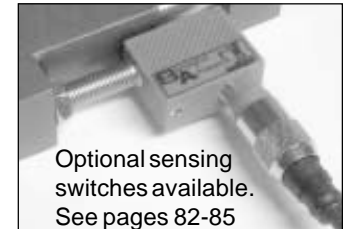
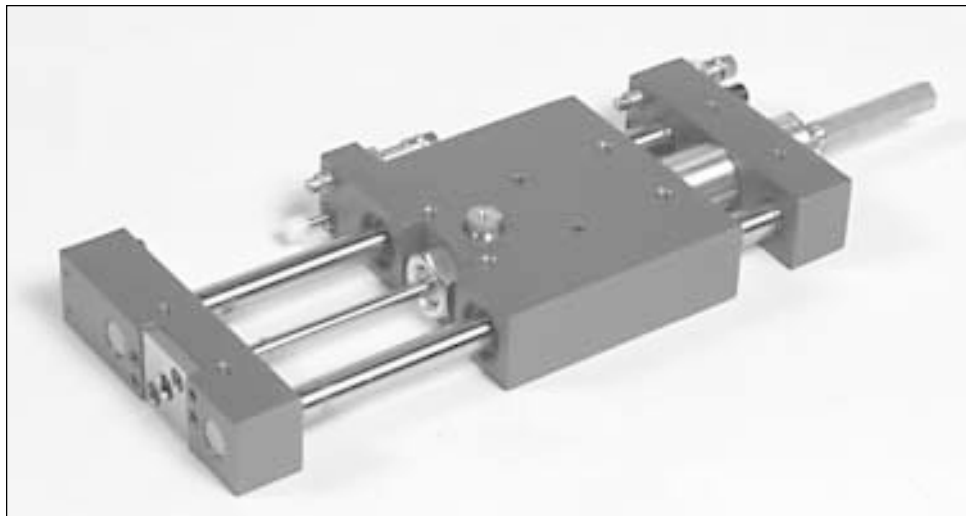


LA-2 Linear Actuator



Type	Stroke	A	B	Force @ 80 PSI	Max load F1	Max load F2	Max load F3	Weight
LA-2-2	0-2"	8.12	10.00	32 lbs	10 lbs	10 lbs	20 lbs	4.0 lbs
LA-2-4	0-4"	10.125	14.00	32 lbs	8 lbs	8 lbs	16 lbs	4.5 lbs
LA-2-6	0-6"	12.125	18.00	32 lbs	6 lbs	6 lbs	12 lbs	5.0 lbs
LA-2-8	0-8"	14.12	22.00	32 lbs	4 lbs	4 lbs	8 lbs	5.5 lbs

Technical data

- ³/₄" Bore
- Stroke designed with built in stopscrews with fine threads.
- The stopscrews can be used with sensing switches.
- Designed for production rates and long life.
- Seal kits and rebuild kits available.

Operating medium Compressed air or hydraulic oil
 Operating pressure 60-100 psi
 Repeat accuracy ±0.0005 in
 Air connection 10-32

Other strokes available upon request