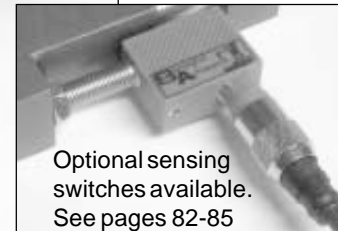
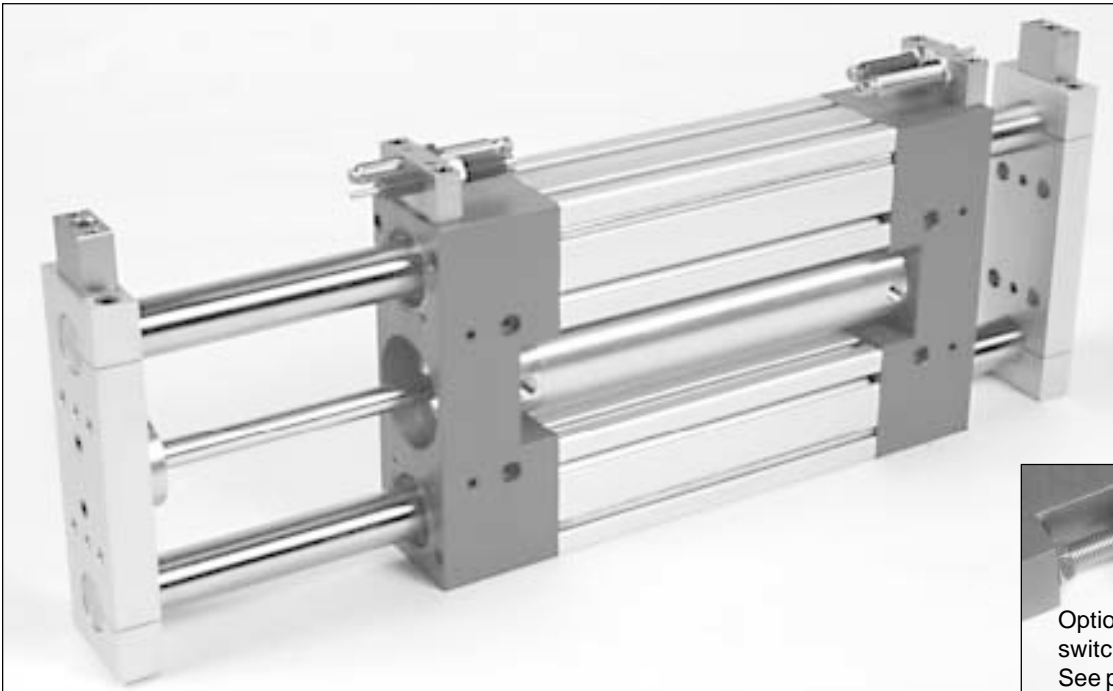
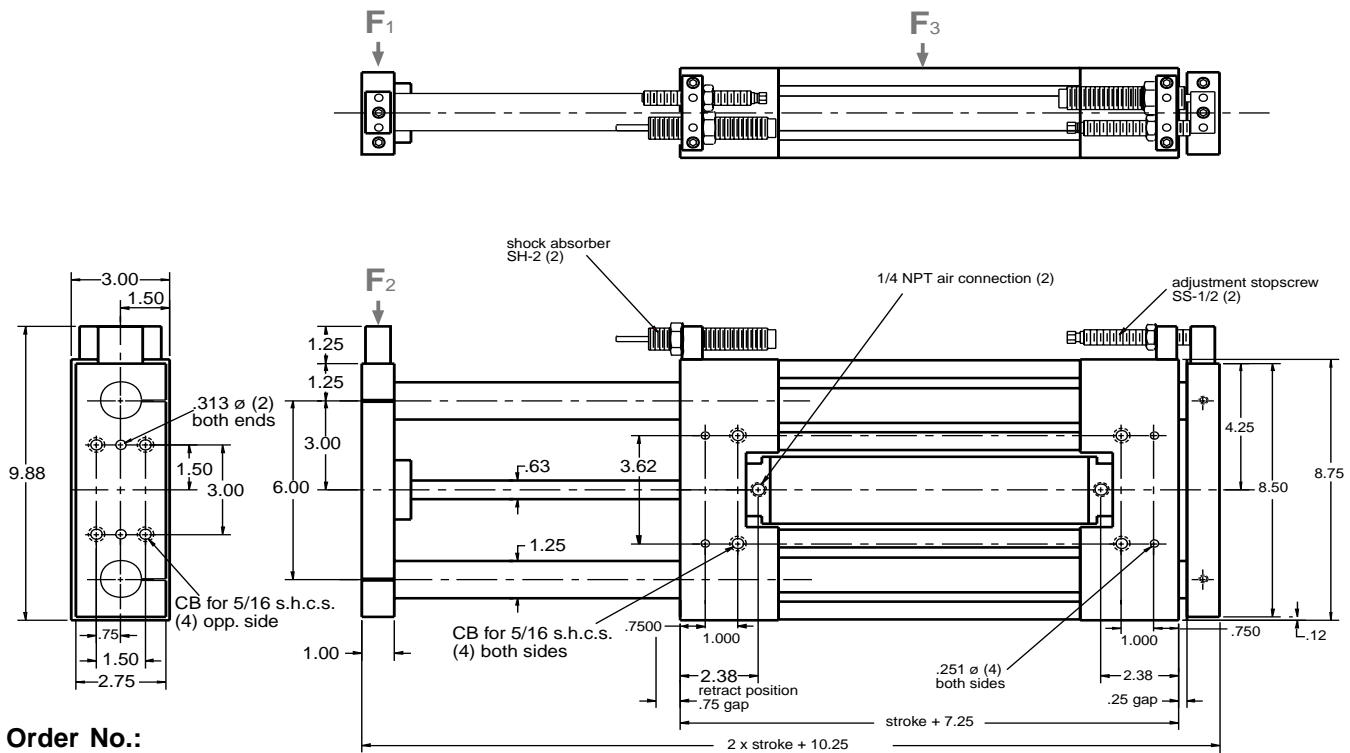


LA-41 Linear Actuator



Optional sensing switches available. See pages 82-85



Order No.:

LA-41--stroke

Strokes available in 1" increments up to 16" stroke

$F_1, F_2 = 480$, stroke = Load (lbs.)

$F_3 = 1600$, stroke = Load (lbs.)

Technical data

- 2" Bore
- Stroke designed with built in stopscrews with fine threads.
- The stopscrews can be used with sensing switches.
- Designed for production rates and long life.
- Seal kits and rebuild kits available.

Operating medium	Compressed air or hydraulic oil
Operating pressure	60-100 psi
Repeat accuracy	± 0.0005 in
Air connection	1/4 NPT

Other strokes available upon request