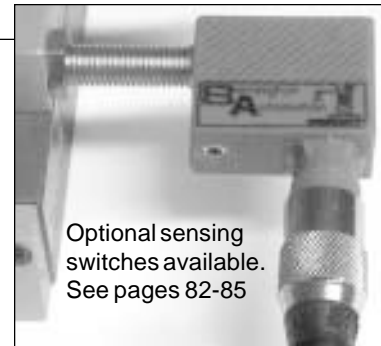


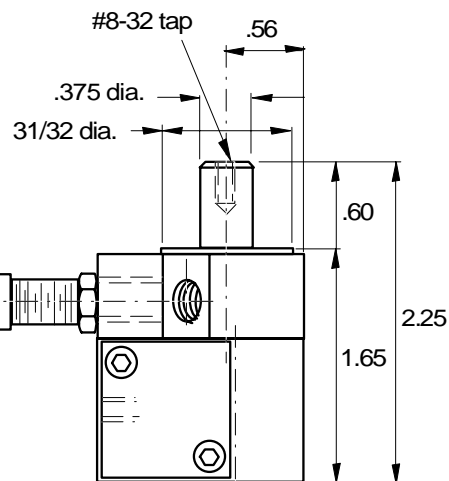
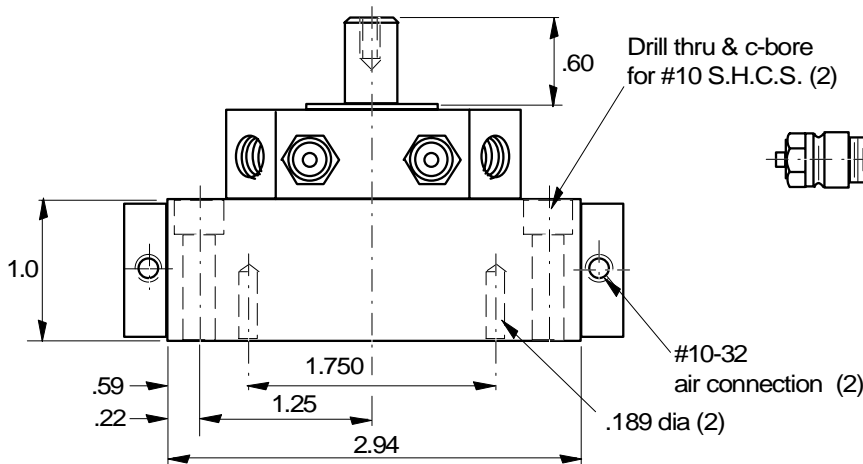
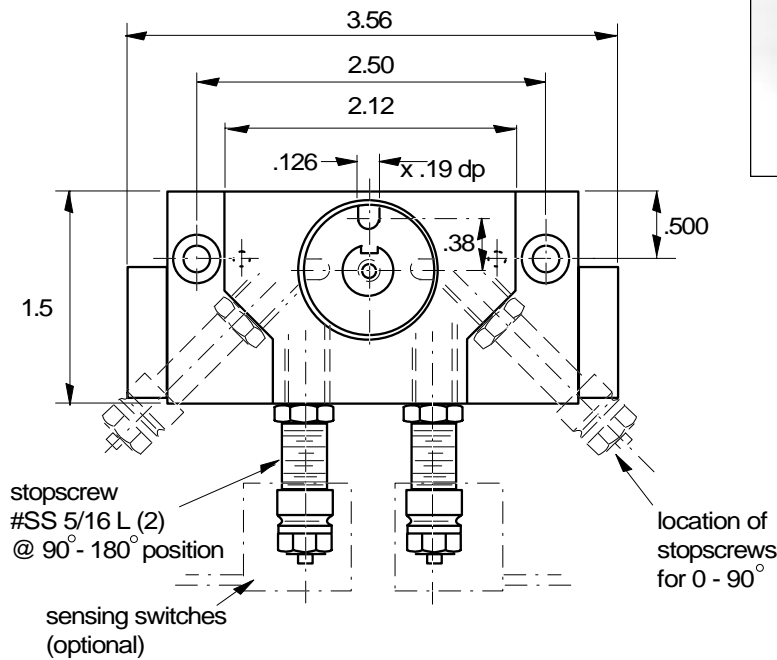
# RD-1 Rotary Drive



0 to 180° fully adjustable



Optional sensing switches available. See pages 82-85



Note: shown in mid-position

**RD-1**

1/2" Bore  
 Angle of rotation 0-180°(fully adjustable)  
 Weight 1 lb

Max. load radial to shaft 4 lbs  
 Max. load axial to shaft 6 lbs  
 Torque at 80 psi 4 in-lbs

**Technical data:**

- Angle of rotation adjusted with built in stop screws with fine threads
  - The stop screws can be used with sensing switches
  - Designed for production rates and long life
- |                    |                        |
|--------------------|------------------------|
| Operating medium   | Compressed air         |
| Operating pressure | 60-100 psi             |
| Repeat accuracy    | ± 0.0005" at 3" radius |
| Air connection     | 10-32                  |