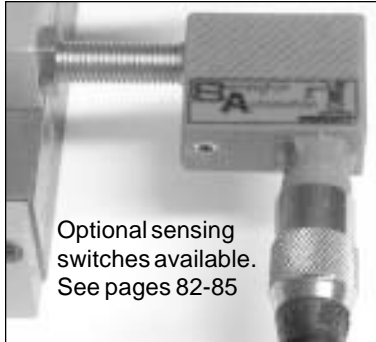


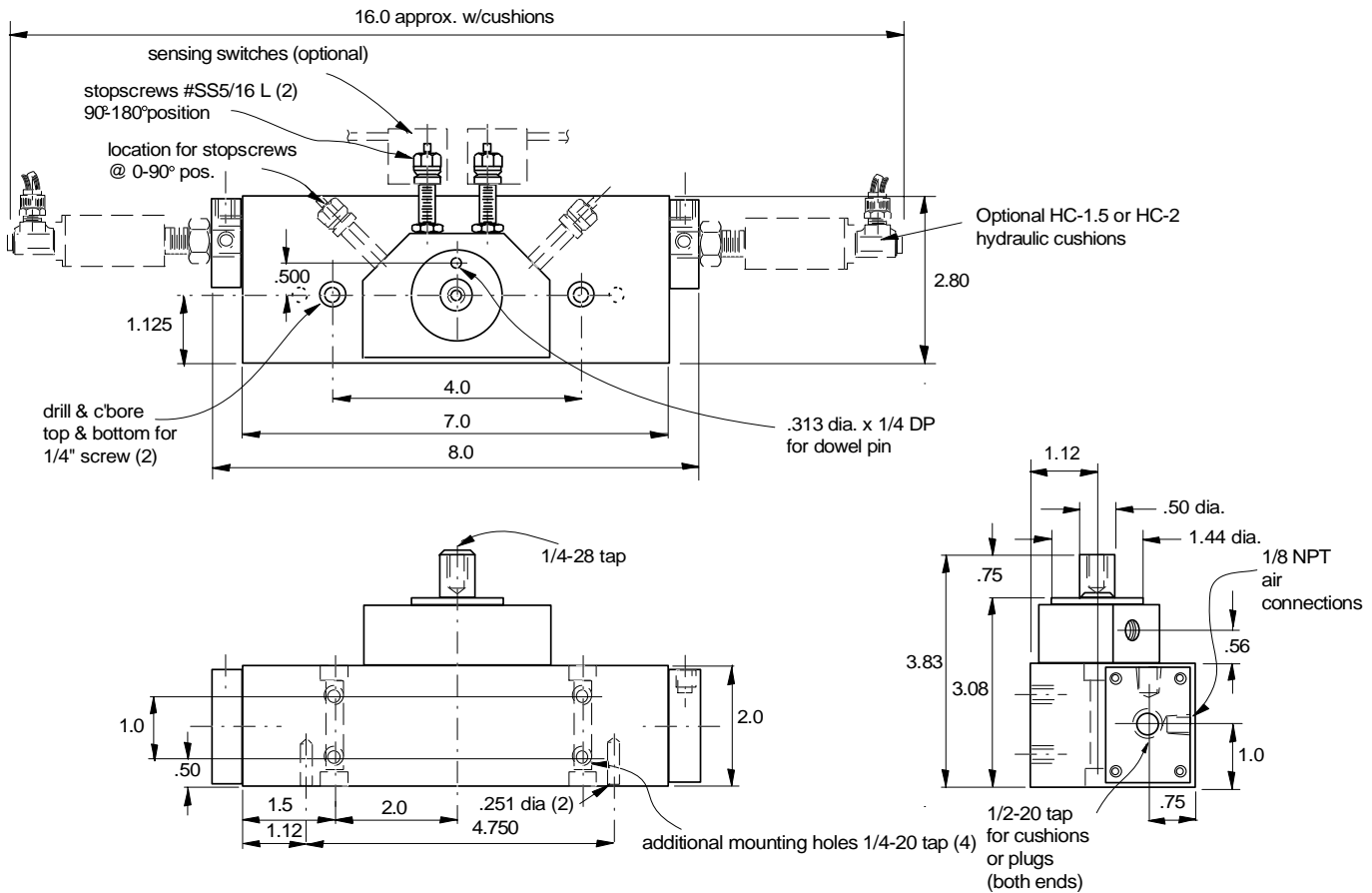
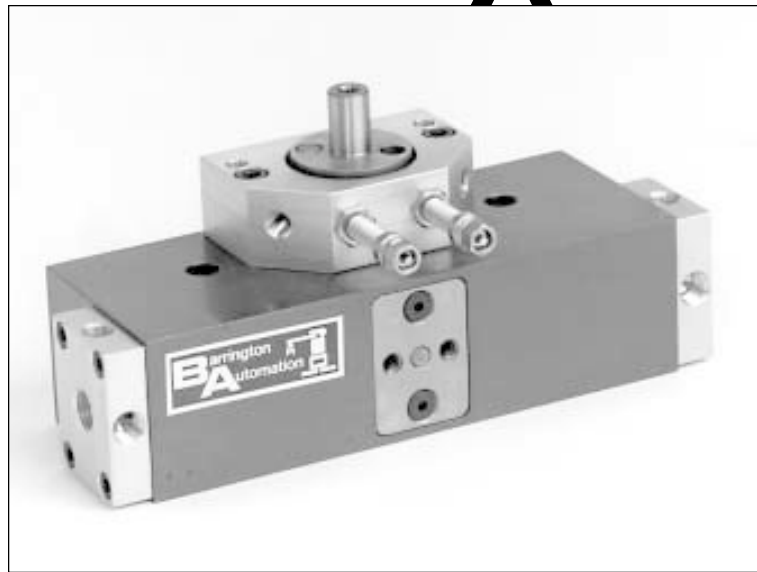
RD-3 Rotary Drive



0 to 180° fully adjustable



Optional sensing switches available. See pages 82-85



RD-3

1 1/4" Bore

Angle of rotation

0-180° (fully adjustable)

Weight

5 lbs

Max. load radial to shaft

20 lbs

Max. load axial to shaft

36 lbs

Torque at 80 psi

36 in-lbs

Note: shown in mid-position

Technical data:

- Angle of rotation adjusted with built in stop screws with fine threads
- The stop screws can be used with sensing switches
- End stops deceleration with available cushions (HC-1.5 or HC-2)
- Designed for production rates and long life

Operating medium

Compressed air or hydraulic oil

Operating pressure

60-100 psi

Repeat accuracy

±0.0005" at 3" radius

Air connection

1/8 NPT