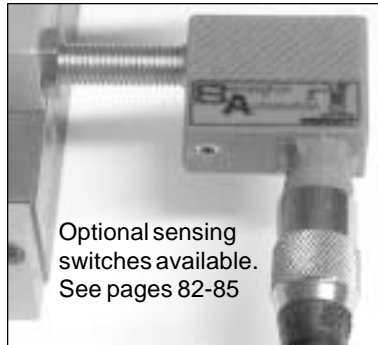
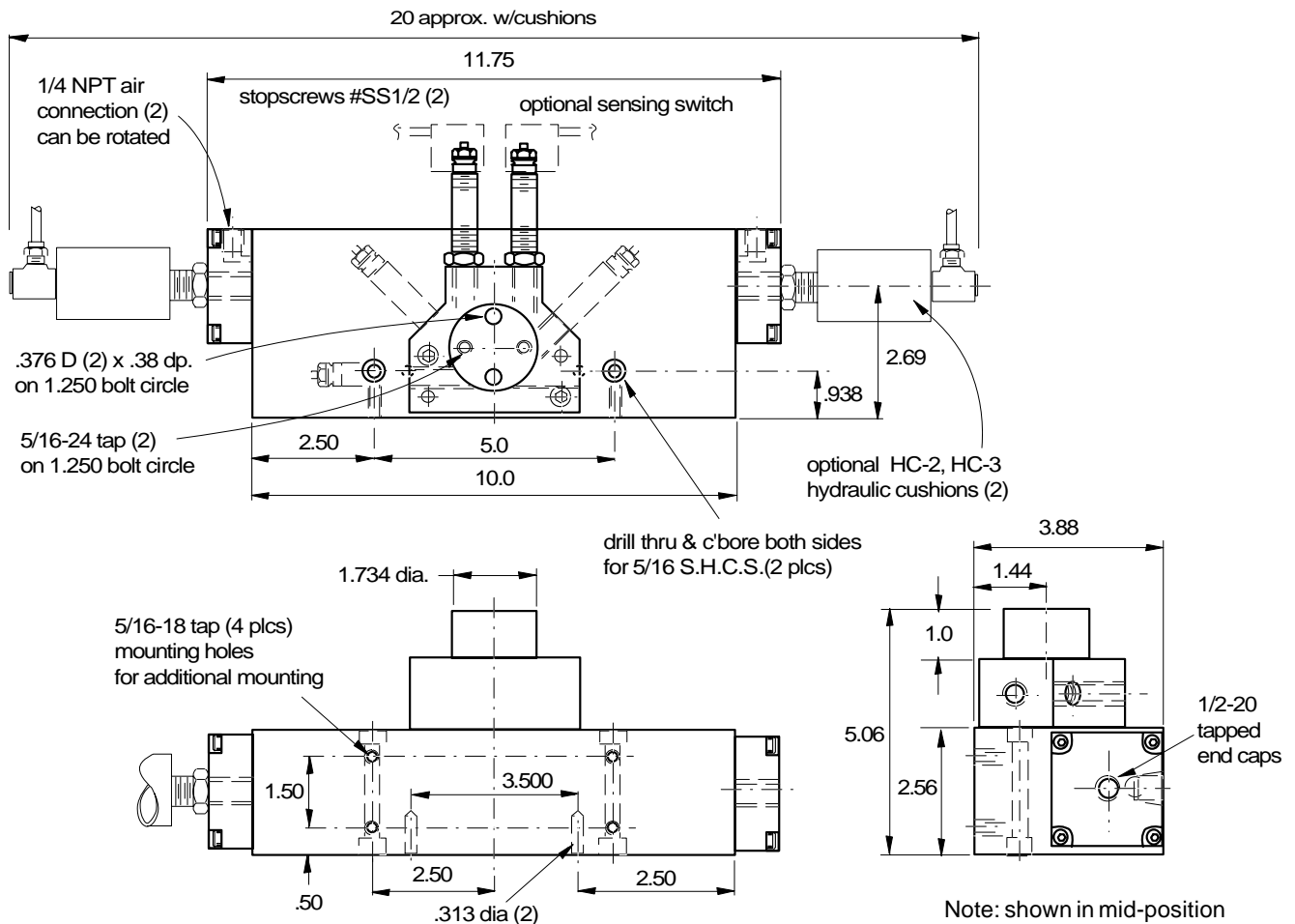


# RD-4 Rotary Drive

0 to 180° fully adjustable



Optional sensing switches available. See pages 82-85



## RD-4

2" Bore

Angle of rotation 0-180°(fully adjustable)

Weight

9.5 lbs

Max. load radial to shaft

60 lbs

Max. load axial to shaft

100 lbs

Torque at 80 psi

120 in-lbs

### Technical data:

-Angle of rotation adjusted with built in stop screws with fine threads

-The stop screws can be used with sensing switches

-End stops deceleration with available cushions (HC-1.5, HC-2, or HC-3)

-Designed for production rates and long life

Operating medium

Compressed air or hydraulic oil

Operating pressure

60-100 psi

Repeat accuracy

± 0.0005" at 3" radius

Air connection

1/4NPT