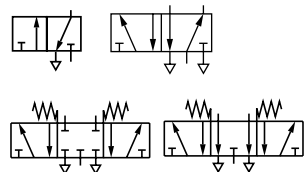


# Super X

## Manually & mechanically actuated spool valve

In-line

3/2, 5/2 & 5/3, 1/8" & 1/4" NPT



### Wide range of operators

Suitable for multi-directional flow and dual supply applications

High flow capacity

Lightweight corrosion resistant materials

\*Applies to emergency stop valves only

### Technical data

Medium:

Compressed air, filtered, lubricated and non-lubricated

Operation:

Spool Valve, directly and indirectly actuated

Mounting:

Through-holes in valve body

Port Size:

1/8" and 1/4" NPT

Operating Pressure:

Maximum 26.5" Hg to 145 psig (-0.9 to 10 bar)

Flow Characteristics:

| Size     | Function      | Cv   | l/min |
|----------|---------------|------|-------|
| 1/8" NPT | 3/2, 5/2, 5/3 | 0.34 | 335   |
| 1/4" NPT | 3/2, 5/2, 5/3 | 0.98 | 965   |

Operating Temperature:

32°F\* to 158°F (0°C\* to 70°C)

\* Consult our Technical Service for use below 35°F (2°C).

Materials

Diecast aluminum alloy body, aluminum or glass filled nylon end covers, nitrile rubber seals

Alternative models

Solenoid and pilot operated version – see web site

### Mechanical

| Port size | Function | Actuation                         | Wt lb | Model      | Service kits | Drawing number |
|-----------|----------|-----------------------------------|-------|------------|--------------|----------------|
| 1/8 NPT   | 3/2      | Plunger /Spring                   | 0.31  | 03 0400 22 | 03 8408 02   | A, 1           |
| 1/8 NPT   | 3/2      | Plunger /Pilot                    | 0.44  | 03 0417 22 | 03 8408 02   | C, 2           |
| 1/8 NPT   | 3/2      | Roller /Spring                    | 0.31  | 03 0402 22 | 03 8408 02   | A, 3           |
| 1/8 NPT   | 3/2      | Roller lever /Spring              | 0.46  | 03 0411 22 | 03 8408 02   | A, 6           |
| 1/8 NPT   | 3/2      | Roller lever (heavy duty) /Spring | 0.46  | 03 0293 22 | 03 8408 02   | A, 4           |
| 1/8 NPT   | 3/2      | Sensitive roller lever /Spring    | 0.55  | 03 0423 22 | -            | A, 5           |
| 1/8 NPT   | 3/2      | Roller /Pilot                     | 0.40  | 03 0409 22 | 03 8408 02   | C, 3           |
| 1/8 NPT   | 3/2      | Roller lever /Pilot               | 0.55  | 03 0427 22 | 03 8408 02   | C, 6           |
| 1/8 NPT   | 3/2      | One-way trip /Spring              | 0.46  | 03 0410 22 | 03 8408 02   | A, 7           |
| 1/8 NPT   | 3/2      | One-way trip (heavy duty) /Spring | 0.46  | 03 0294 22 | 03 8408 02   | A, 8           |
| 1/8 NPT   | 3/2      | Antenna /Spring                   | 0.46  | 03 0432 22 | -            | A, 9           |
| 1/8 NPT   | 5/2      | Plunger /Spring                   | 0.55  | X3 0440 22 | 03 8408 02   | E, 1           |
| 1/8 NPT   | 5/2      | Plunger /Pilot                    | 0.68  | X3 0457 22 | 03 8408 02   | G, 2           |
| 1/8 NPT   | 5/2      | Roller /Spring                    | 0.55  | X3 0442 22 | 03 8408 02   | E, 3           |
| 1/8 NPT   | 5/2      | Roller lever /Spring              | 0.71  | X3 0451 22 | 03 8408 02   | E, 6           |
| 1/8 NPT   | 5/2      | Roller lever (heavy duty) /Spring | 0.64  | X3 0393 22 | 03 8408 02   | E, 4           |
| 1/8 NPT   | 5/2      | Sensitive roller lever /Spring    | 0.79  | X3 0463 22 | -            | E, 5           |
| 1/8 NPT   | 5/2      | Roller /Pilot                     | 0.64  | X3 0449 22 | 03 8408 02   | G, 3           |
| 1/8 NPT   | 5/2      | Roller lever /Pilot               | 0.79  | X3 0467 22 | 03 8408 02   | G, 6           |
| 1/8 NPT   | 5/2      | One-way trip /Spring              | 0.71  | X3 0450 22 | 03 8408 02   | E, 7           |
| 1/8 NPT   | 5/2      | One-way trip (heavy duty) /Spring | 0.64  | X3 0394 22 | 03 8408 02   | E, 8           |
| 1/8 NPT   | 5/2      | Antenna /Spring                   | 0.66  | X3 0472 22 | -            | E, 9           |
| 1/4 NPT   | 3/2      | Plunger /Spring                   | 0.75  | 03 0600 22 | 03 8602 02   | B, 1           |
| 1/4 NPT   | 3/2      | Roller /Spring                    | 0.75  | 03 0602 22 | 03 8602 02   | B, 3           |
| 1/4 NPT   | 3/2      | Roller lever /Spring              | 0.90  | 03 0611 22 | 03 8602 02   | B, 6           |
| 1/4 NPT   | 3/2      | Roller /Pilot                     | 0.86  | 03 0609 22 | 03 8612 02   | D, 3           |
| 1/4 NPT   | 3/2      | Roller lever /Pilot               | 0.99  | 03 0624 22 | 03 8612 02   | D, 6           |
| 1/4 NPT   | 5/2      | Plunger /Spring                   | 1.01  | X3 0640 22 | 03 8602 02   | B, 2           |
| 1/4 NPT   | 5/2      | Roller /Spring                    | 1.01  | X3 0642 22 | 03 8602 02   | B, 3           |
| 1/4 NPT   | 5/2      | Roller lever /Spring              | 1.17  | X3 0651 22 | 03 8602 02   | B, 6           |
| 1/4 NPT   | 5/2      | Roller /Pilot                     | 1.10  | X3 0649 22 | 03 8612 02   | D, 3           |
| 1/4 NPT   | 5/2      | Roller lever /Pilot               | 1.26  | X3 0664 22 | 03 8612 02   | D, 6           |

# Super X

## Manually & mechanically actuated spool valve

In-line

3/2, 5/2 & 5/3, 1/8", & 1/4" NPT

### Manual

| Port size | Function | Actuation                 | Mid position | Color  | Wt lb | Model          | Service kits | Drawing number |
|-----------|----------|---------------------------|--------------|--------|-------|----------------|--------------|----------------|
| 1/8 NPT   | 3/2      | Button/spring             | –            | Black  | 0.33  | 03 0404 22     | 03 8408 02   | A, 10          |
| 1/8 NPT   | 3/2      | Button (palm)/spring      | –            | Red    | 0.64  | 03 0366 22     | 03 8408 02   | A, 11          |
| 1/8 NPT   | 3/2      | Button (palm)/spring      | –            | Green  | 0.64  | 03 0367 22     | 03 8408 02   | A, 11          |
| 1/8 NPT   | 3/2      | Button (palm)/spring      | –            | Black  | 0.64  | 03 0368 22     | 03 8408 02   | A, 11          |
| 1/8 NPT   | 3/2      | Button (shrouded)/spring  | –            | Black  | 0.46  | 03 0414 22     | 03 8408 02   | A, 12          |
| 1/8 NPT   | 3/2      | Button/pilot              | –            | Black  | 0.49  | 03 0408 22     | 03 8408 02   | D, 10          |
| 1/8 NPT   | 3/2      | Button/pilot              | –            | Green  | 0.49  | 03 0420 22     | 03 8408 02   | D, 10          |
| 1/8 NPT   | 3/2      | Button/pilot              | –            | Red    | 0.49  | 03 0421 22     | 03 8408 02   | D, 10          |
| 1/8 NPT   | 3/2      | Emergency stop/twist ring | –            | Red    | 0.68  | 03 0428 22     | 03 8473 02   | A, 13          |
| 1/8 NPT   | 3/2      | Button (palm)/key         | –            | Red    | 0.82  | 03 0335 22 801 | 03 8408 02   | A, 14          |
| 1/8 NPT   | 3/2      | Lever/spring              | –            | Black  | 0.62  | 03 0438 22     | 03 8408 02   | A, 17          |
| 1/8 NPT   | 3/2      | Lever knob/spring         | –            | Black  | 0.55  | 03 0426 22     | 03 8408 02   | A, NA          |
| 1/8 NPT   | 3/2      | Lever/lever               | –            | Black  | 0.64  | 03 0437 22     | 03 8408 02   | A, 17          |
| 1/8 NPT   | 3/2      | Toggle/toggle             | –            | Black  | 0.35  | 03 0403 22     | 03 8408 02   | A, 16          |
| 1/8 NPT   | 3/2      | Knob/knob                 | –            | Black  | 0.37  | 03 0425 22     | 03 8408 02   | A, 10          |
| 1/8 NPT   | 3/2      | Knob/knob or pilot        | –            | Black  | 0.46  | 03 0424 22     | 03 8408 02   | D, 10          |
| 1/8 NPT   | 3/2      | Rotary knob/rotary knob   | –            | Black  | 0.64  | 03 0419 22     | 03 8408 02   | A, 19          |
| 1/8 NPT   | 3/2      | Key/key                   | –            | Chrome | 0.79  | 03 0418 22 801 | 03 8408 02   | A, 20          |
| 1/8 NPT   | 3/2      | Pedal/spring              | –            | Black  | 2.27  | 03 0481 22     | 03 8408 02   | 21             |
| 1/8 NPT   | 3/2      | Pedal/pedal               | –            | Black  | 2.36  | 03 0483 22     | 03 8408 02   | 21             |
| 1/8 NPT   | 5/2      | Button/spring             | –            | Black  | 0.57  | X3 0444 22     | 03 8408 02   | E, 10          |
| 1/8 NPT   | 5/2      | Button (palm)/spring      | –            | Red    | 0.88  | X3 0386 22     | 03 8408 02   | E, 11          |
| 1/8 NPT   | 5/2      | Button (palm)/spring      | –            | Green  | 0.88  | X3 0387 22     | 03 8408 02   | E, 11          |
| 1/8 NPT   | 5/2      | Button (palm)/spring      | –            | Black  | 0.88  | X3 0388 22     | 03 8408 02   | E, 11          |
| 1/8 NPT   | 5/2      | Button (shrouded)/spring  | –            | Black  | 0.71  | X3 0454 22     | 03 8408 02   | E, 12          |
| 1/8 NPT   | 5/2      | Button (shrouded)/spring  | –            | Green  | 0.71  | X3 0455 22     | 03 8408 02   | E, 12          |
| 1/8 NPT   | 5/2      | Button (shrouded)/spring  | –            | Red    | 0.71  | X3 0456 22     | 03 8408 02   | E, 12          |
| 1/8 NPT   | 5/2      | Button/pilot              | –            | Black  | 0.75  | X3 0448 22     | 03 8408 02   | G, 10          |
| 1/8 NPT   | 5/2      | Button/pilot              | –            | Green  | 0.75  | X3 0460 22     | 03 8408 02   | G, 10          |
| 1/8 NPT   | 5/2      | Button/pilot              | –            | Red    | 0.75  | X3 0461 22     | 03 8408 02   | G, 10          |
| 1/8 NPT   | 5/2      | Knob, push/knob, pull     | –            | Black  | 0.62  | X3 0465 22     | 03 8408 02   | E, 18          |
| 1/8 NPT   | 5/2      | Emergency stop/twist ring | –            | Red    | 1.19  | X3 0468 22     | 03 8473 02   | E, 13          |
| 1/8 NPT   | 5/2      | Button (palm)/key         | –            | Red    | 1.06  | X3 0375 22 801 | 03 8408 02   | E, 14          |
| 1/8 NPT   | 5/2      | Lever/spring              | –            | Black  | 0.88  | X3 0478 22     | 03 8408 02   | E, 16          |
| 1/8 NPT   | 5/2      | Lever knob/spring         | –            | Black  | 0.62  | X3 0466 22     | 03 8408 02   | E, NA          |
| 1/8 NPT   | 5/2      | Toggle/toggle             | –            | Black  | 0.60  | X3 0443 22     | 03 8408 02   | E, 16          |
| 1/8 NPT   | 5/2      | Lever/lever               | –            | Black  | 0.88  | X3 0477 22     | 03 8408 02   | E, 17          |
| 1/8 NPT   | 5/2      | Knob/knob or pilot        | –            | Black  | 0.71  | X3 0464 22     | 03 8408 02   | G, 10          |
| 1/8 NPT   | 5/2      | Rotary knob/rotary knob   | –            | Black  | 0.88  | X3 0459 22     | 03 8408 02   | E, 19          |
| 1/8 NPT   | 5/2      | Key/key                   | –            | Chrome | 1.04  | X3 0458 22 801 | 03 8408 02   | E, 20          |
| 1/8 NPT   | 5/2      | Pedal/spring              | –            | Black  | 2.47  | X3 0482 22     | 03 8408 02   | 22             |
| 1/8 NPT   | 5/2      | Pedal/pedal               | –            | Black  | 2.60  | X3 0484 22     | 03 8408 02   | 22             |
| 1/8 NPT   | 5/3      | Lever/spring/lever        | APB          | Black  | 1.87  | X3 3438 22     | 03 8408 02   | J, 16          |
| 1/8 NPT   | 5/3      | Lever/spring/lever        | COE          | Black  | 1.87  | X3 3478 22     | 03 8408 02   | J, 16          |
| 1/8 NPT   | 5/3      | Lever/lever/lever         | APB          | Black  | 0.97  | X3 3437 22     | 03 8408 02   | J, 16          |
| 1/8 NPT   | 5/3      | Lever/lever/lever         | COE          | Black  | 0.97  | X3 3477 22     | 03 8408 02   | J, 16          |
| 1/4 NPT   | 3/2      | Button/spring             | –            | Black  | 0.77  | 03 0604 22     | 03 8602 02   | B, 23          |
| 1/4 NPT   | 3/2      | Button/pilot              | –            | Black  | 0.93  | 03 0608 22     | 03 8612 02   | D, 23          |
| 1/4 NPT   | 3/2      | Lever/spring              | –            | Black  | 2.34  | 03 0638 22     | 03 8602 02   | B, 22          |
| 1/4 NPT   | 3/2      | Lever/lever               | –            | Black  | 1.08  | 03 0637 22     | 03 8602 02   | B, 22          |
| 1/4 NPT   | 3/2      | Knob/knob                 | –            | Black  | 0.82  | 03 0625 22     | 03 8602 02   | B, 24          |
| 1/4 NPT   | 3/2      | Knob/knob or pilot        | –            | Black  | 0.90  | 03 0627 22     | 03 8612 02   | D, 24          |
| 1/4 NPT   | 3/2      | Pedal/spring              | –            | Black  | 2.71  | 03 0681 22     | 03 8602 02   | 21             |
| 1/4 NPT   | 3/2      | Pedal/pedal               | –            | Black  | 2.80  | 03 0683 22     | 03 8602 02   | 21             |
| 1/4 NPT   | 5/2      | Button/spring             | –            | Black  | 1.04  | X3 0644 22     | 03 8602 02   | F, 23          |
| 1/4 NPT   | 5/2      | Button/pilot              | –            | Black  | 1.19  | X3 0648 22     | 03 8612 02   | H, 23          |
| 1/4 NPT   | 5/2      | Lever/spring              | –            | Black  | 1.32  | X3 0678 22     | 03 8602 02   | E, 22          |
| 1/4 NPT   | 5/2      | Lever/lever               | –            | Black  | 1.35  | X3 0677 22     | 03 8602 02   | E, 22          |
| 1/4 NPT   | 5/2      | Knob/knob                 | –            | Black  | 1.08  | X3 0665 22     | 03 8602 02   | 21             |
| 1/4 NPT   | 5/2      | Pedal/spring              | –            | Black  | 2.93  | X3 0682 22     | 03 8602 02   | 21             |
| 1/4 NPT   | 5/2      | Pedal/pedal               | –            | Black  | 3.06  | X3 0684 22     | 03 8602 02   | J, 22          |
| 1/4 NPT   | 5/3      | Lever/spring/lever        | APB          | Black  | 1.06  | X3 3638 22     | 03 8602 02   | J, 22          |
| 1/4 NPT   | 5/3      | Lever/spring/lever        | COE          | Black  | 1.06  | X3 3678 22     | 03 8602 02   | J, 22          |
| 1/4 NPT   | 5/3      | Lever/lever/lever         | APB          | Black  | 1.43  | X3 3637 22     | 03 8602 02   | J, 22          |
| 1/4 NPT   | 5/3      | Lever/lever/lever         | COE          | Black  | 1.43  | X3 3677 22     | 03 8602 02   | J, 22          |

APB = All Ports Blocked COE = Center Open Exhaust

# Super X

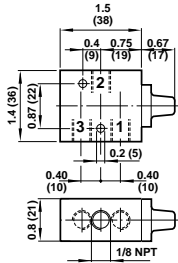
## Manually & mechanically actuated spool valve

In-line

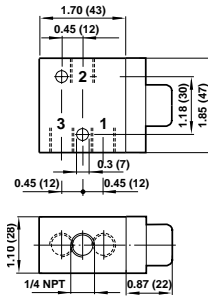
3/2, 5/2 & 5/3, 1/8" & 1/4" NPT

Dimensions in inches (mm)

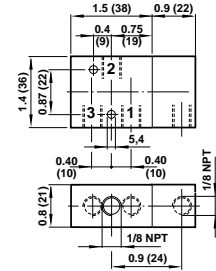
**A** 1/8" NPT, 3/2 Spring return, basic body



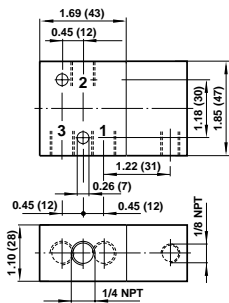
**B** 1/4" NPT, 3/2 Spring return, basic body



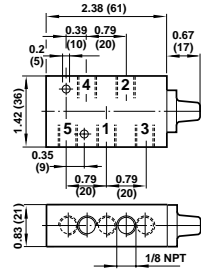
**C** 1/8" NPT, 3/2 Pilot return, basic body



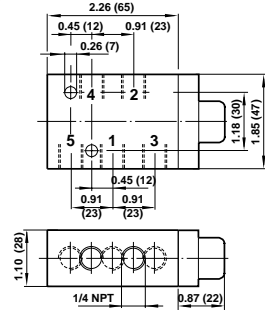
**D** 1/4" NPT, 3/2 Pilot return, basic body



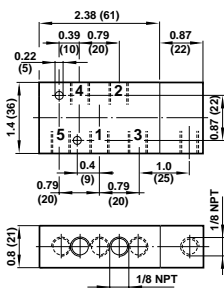
**E** 1/8" NPT, 5/2 Spring return, basic body



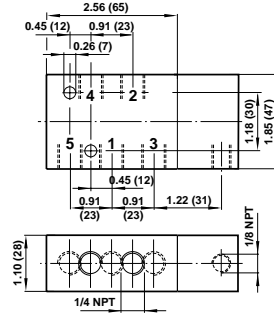
**F** 1/4" NPT, 5/2 Spring return, basic body



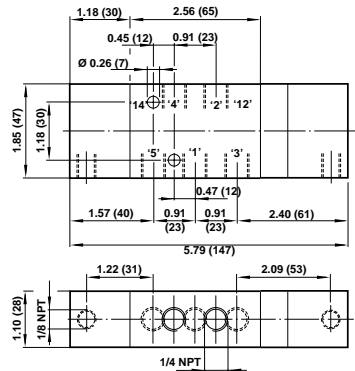
**G** 1/8" NPT, 5/2 Pilot return, basic body



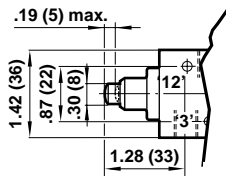
**H** 1/4" NPT, 5/2 Pilot return, basic body



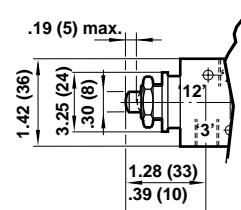
**J** 1/4" NPT, 5/3 Spring return, basic body



**1** Plunger Spring Return



**2** Plunger Pilot Return



# Super X

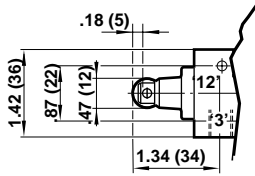
Manually & mechanically actuated spool valve

In-line

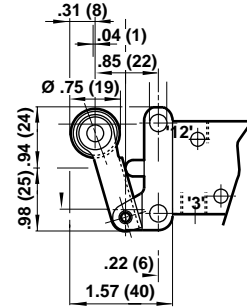
3/2, 5/2 & 5/3, 1/8", & 1/4" NPT

Dimensions in inches (mm)

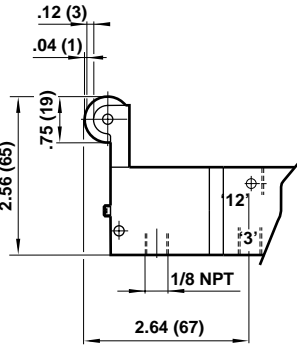
**3** Roller



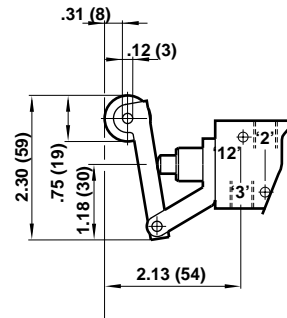
**4** Heavy Duty Roller Lever



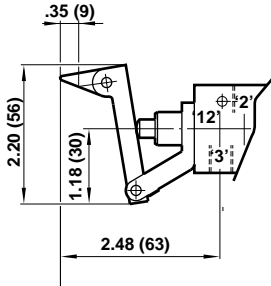
**5** Sensitive Roller Lever



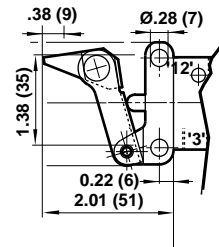
**6** Roller Lever



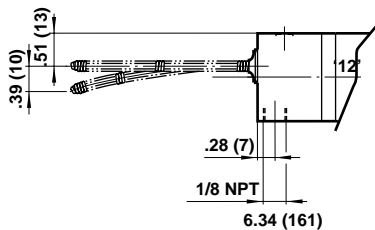
**7** One-way Trip



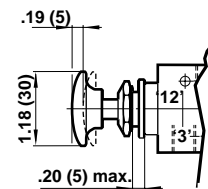
**8** Heavy Duty One Way Trip



**9** Antenna



**10** Button Operated



# Super X

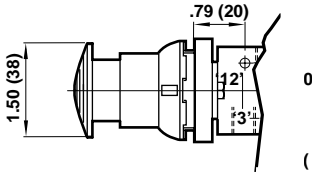
Manually & mechanically actuated spool valve

In-line

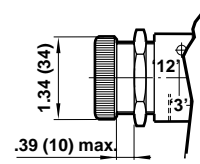
3/2, 5/2 & 5/3, 1/8" & 1/4" NPT

Dimensions in inches (mm)

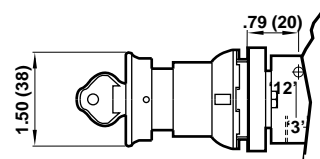
**11** Button (Palm) Operated



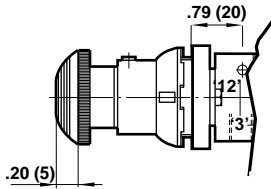
**12** Button (Shrouded) Operated



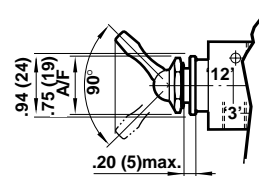
**14** Button (Palm) Operated Key Return Valve



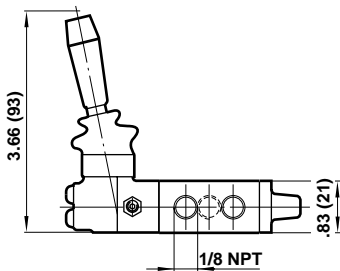
**13** Palm Button Operated, Twist Return Valve (Emergency Stop)



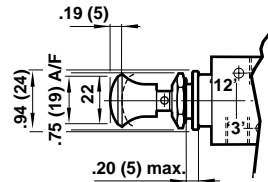
**16** Lever Operated



**17** Lever Operated



**18** Knob Operated



# Super X

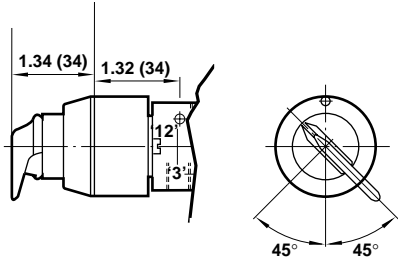
Manually & mechanically actuated spool valve

In-line

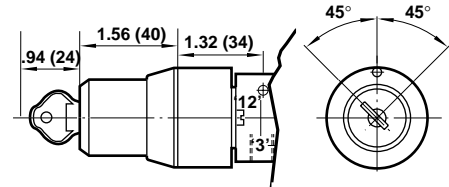
3/2, 5/2 & 5/3, 1/8", & 1/4" NPT

Dimensions in inches (mm)

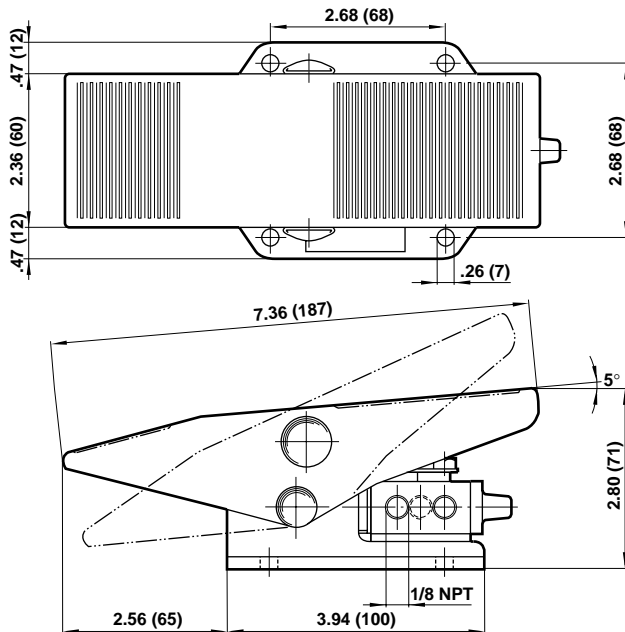
**19** Rotary Knob Operated Rotary Knob Return Valve



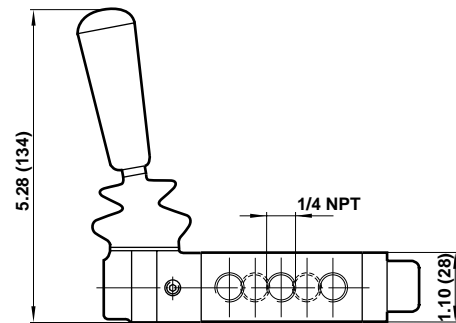
**20** Key Operated Key Return Valve



**21** Pedal



**22** Lever Operated Valves



# Super X

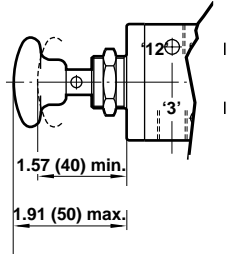
## Manually & mechanically actuated spool valve

In-line

3/2, 5/2 & 5/3, 1/8" & 1/4" NPT

Dimensions in inches (mm)

**23** Button Operated Pilot Return Valve



**24** Knob Operated Knob Return Valve

